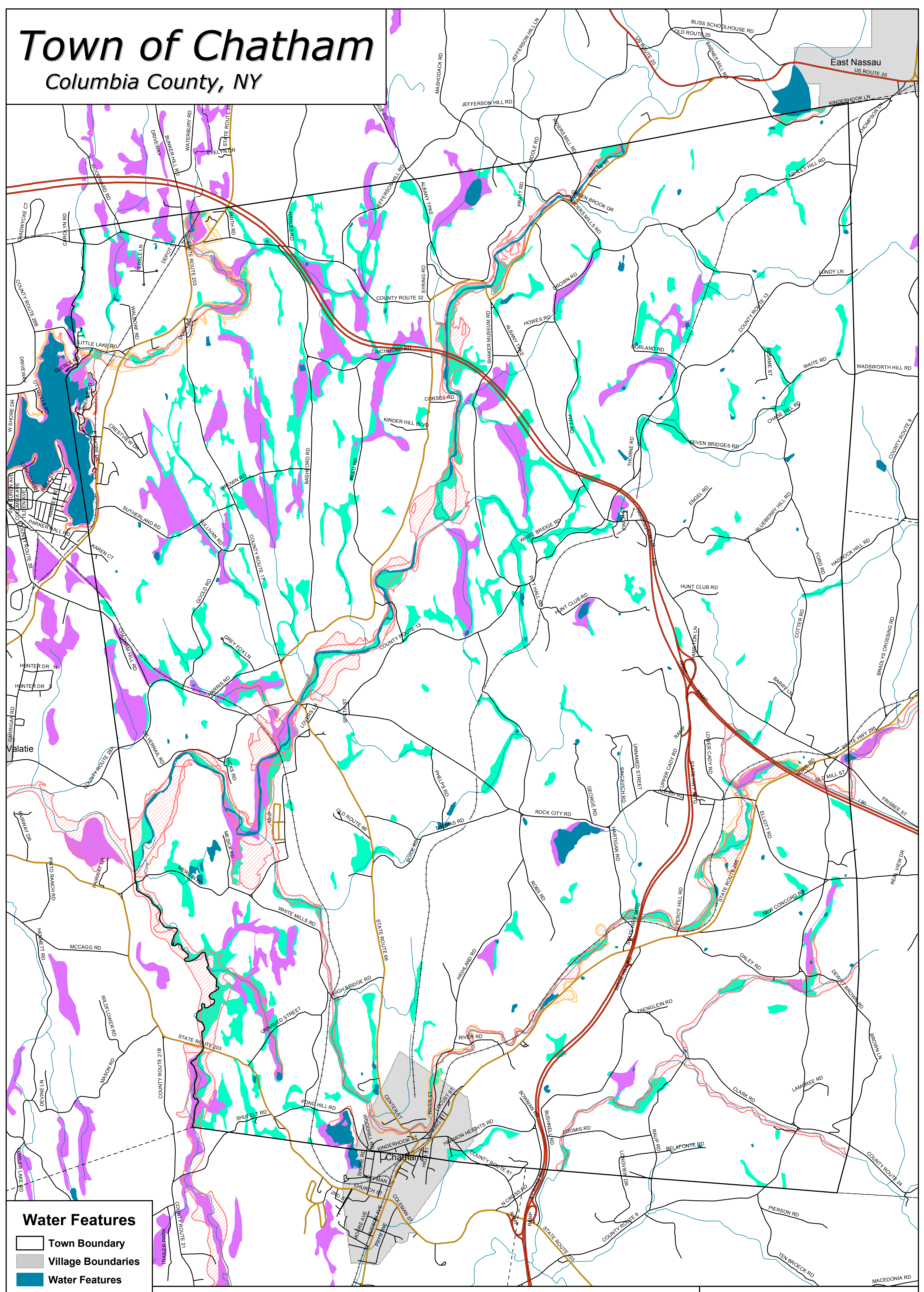
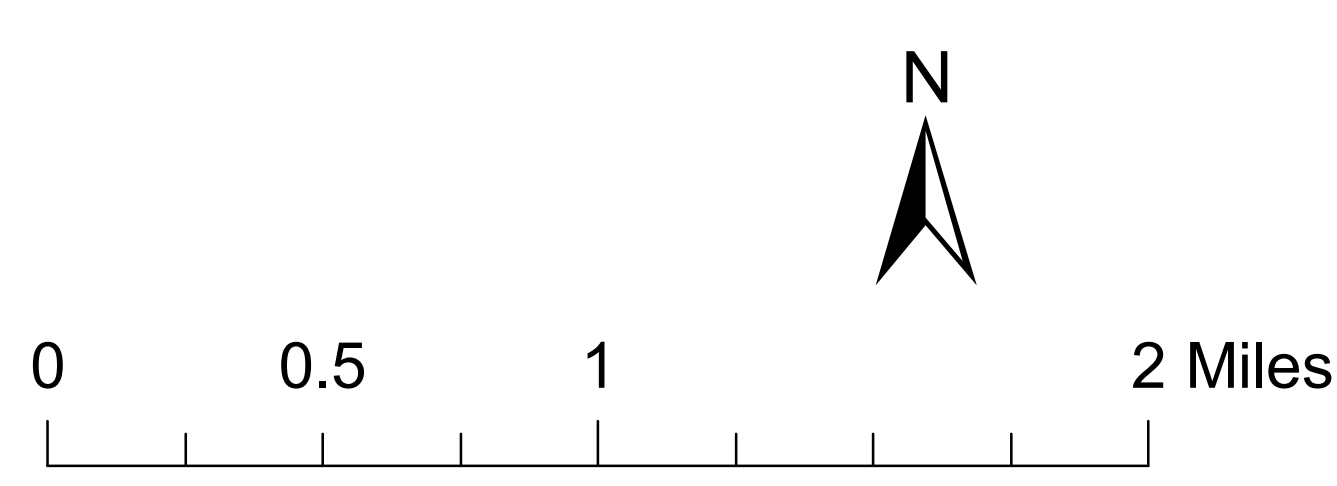


# Town of Chatham

## Columbia County, NY



- Water Features**
- Town Boundary
  - Village Boundaries
  - Water Features
  - Streams
  - Wetlands-NYS DEC
  - Hydric Soils
- Flood Hazard Zones**
- 100 Year
  - 500 Year



**Community Planning &  
Environmental Associates**

Nan Stolzenburg, AICP - [www.planningbetterplaces.com](http://www.planningbetterplaces.com)  
152 Stolzenburg Road, Berne, NY 12023  
Don Meltz, Planning and GIS - [www.donmeltz.com](http://www.donmeltz.com)