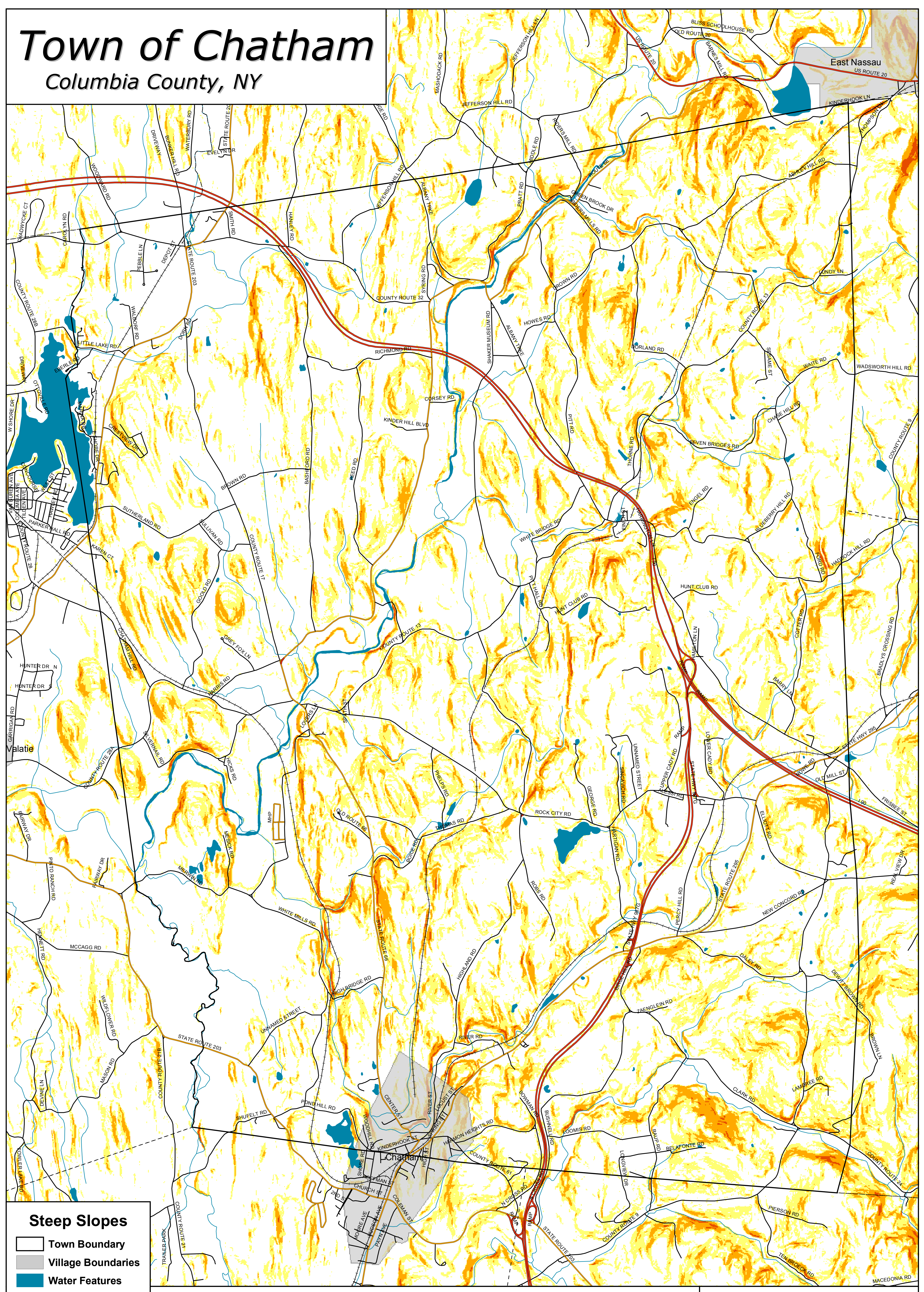


Town of Chatham

Columbia County, NY

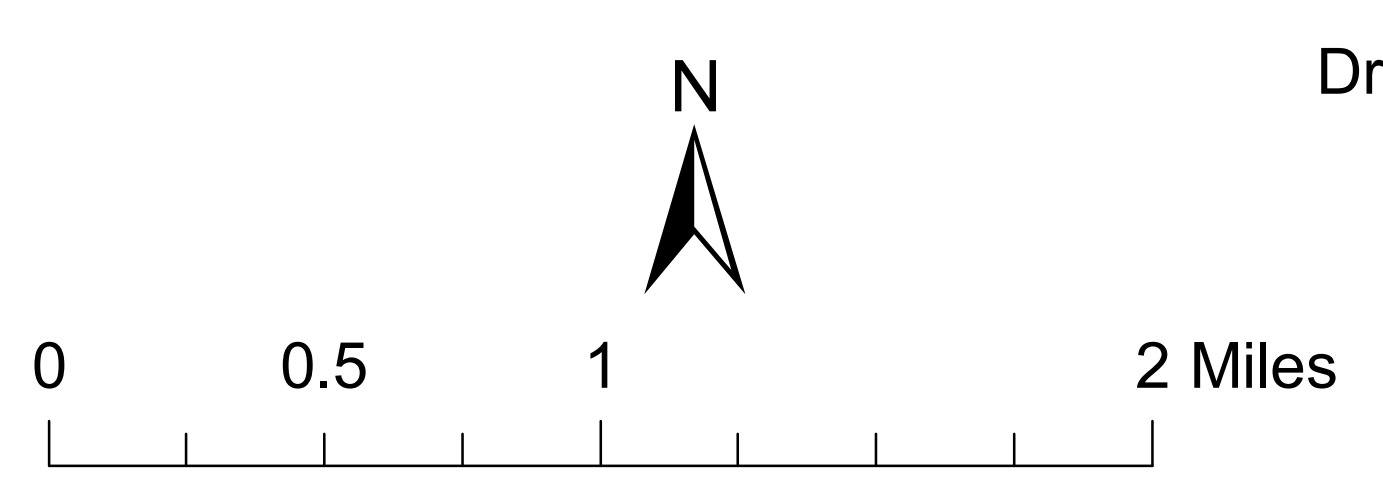


Steep Slopes

- Town Boundary
- Village Boundaries
- Water Features
- Streams

Percent Slope

- <15%
- 15 - 25%
- 25 - 45%
- >45%



Draft Map Date:
8-4-2004

**Community Planning &
Environmental Associates**

Nan Stolzenburg, AICP - www.planningbetterplaces.com
152 Stolzenburg Road, Berne, NY 12023
Don Meltz, Planning and GIS - www.donmeltz.com