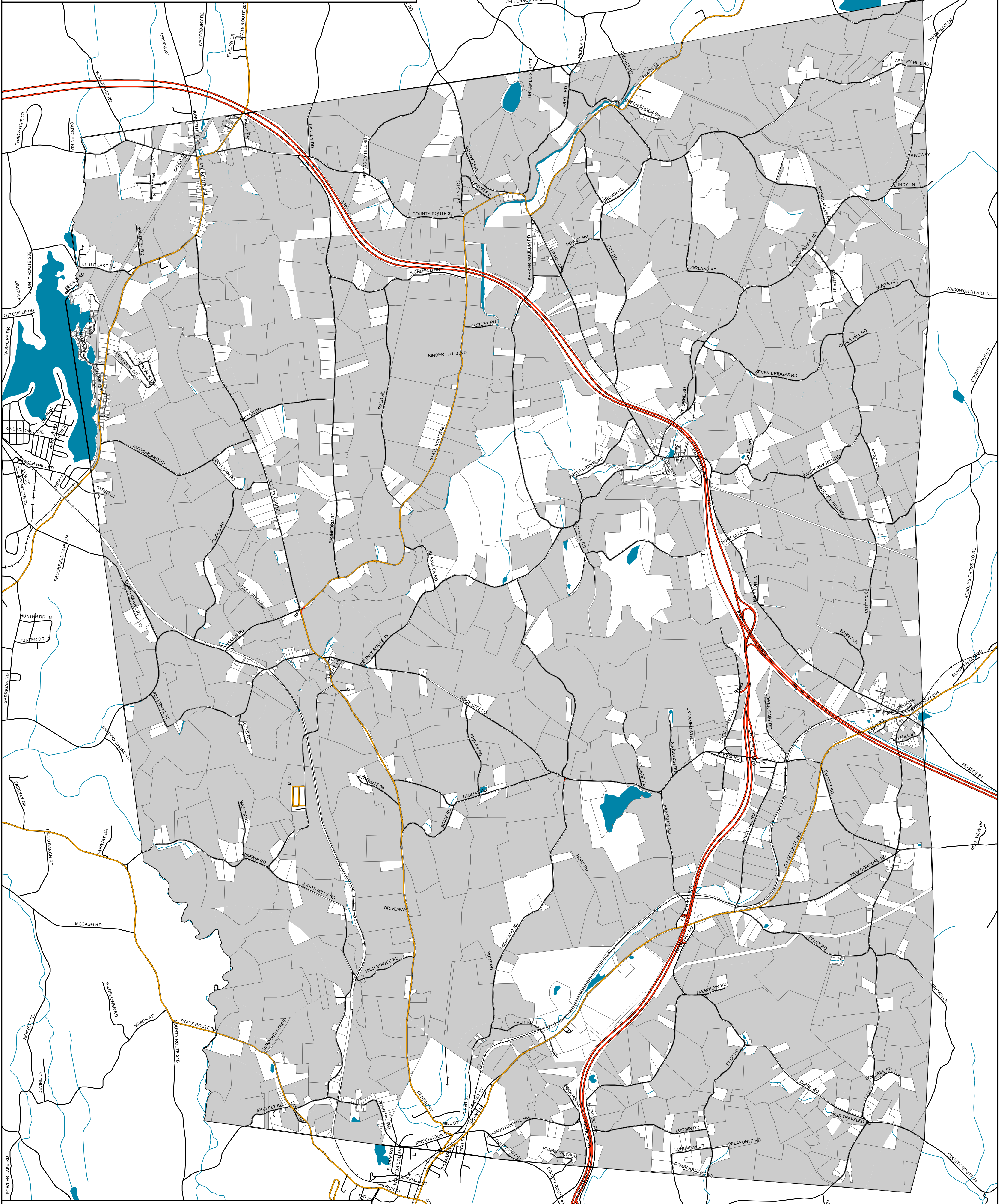


# Town of Chatham

## Columbia County, NY



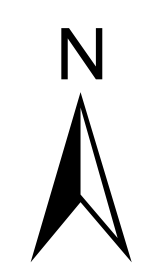
### Buildout Analysis

#### Buildable Parcels

- Town Boundary
- Water Features
- Streams
- Parcel Boundaries
- Buildable Parcels

#### Roads

- Primary Highway
- Secondary Road-State or County
- Local Road
- Railroads



Draft Map Date:  
8-2-2005



**Community Planning &  
Environmental Associates**

Nan Stolzenburg, AICP - [www.planningbetterplaces.com](http://www.planningbetterplaces.com)  
152 Stolzenburg Road, Berne, NY 12023  
Don Meltz, Planning and GIS - [www.donmeltz.com](http://www.donmeltz.com)