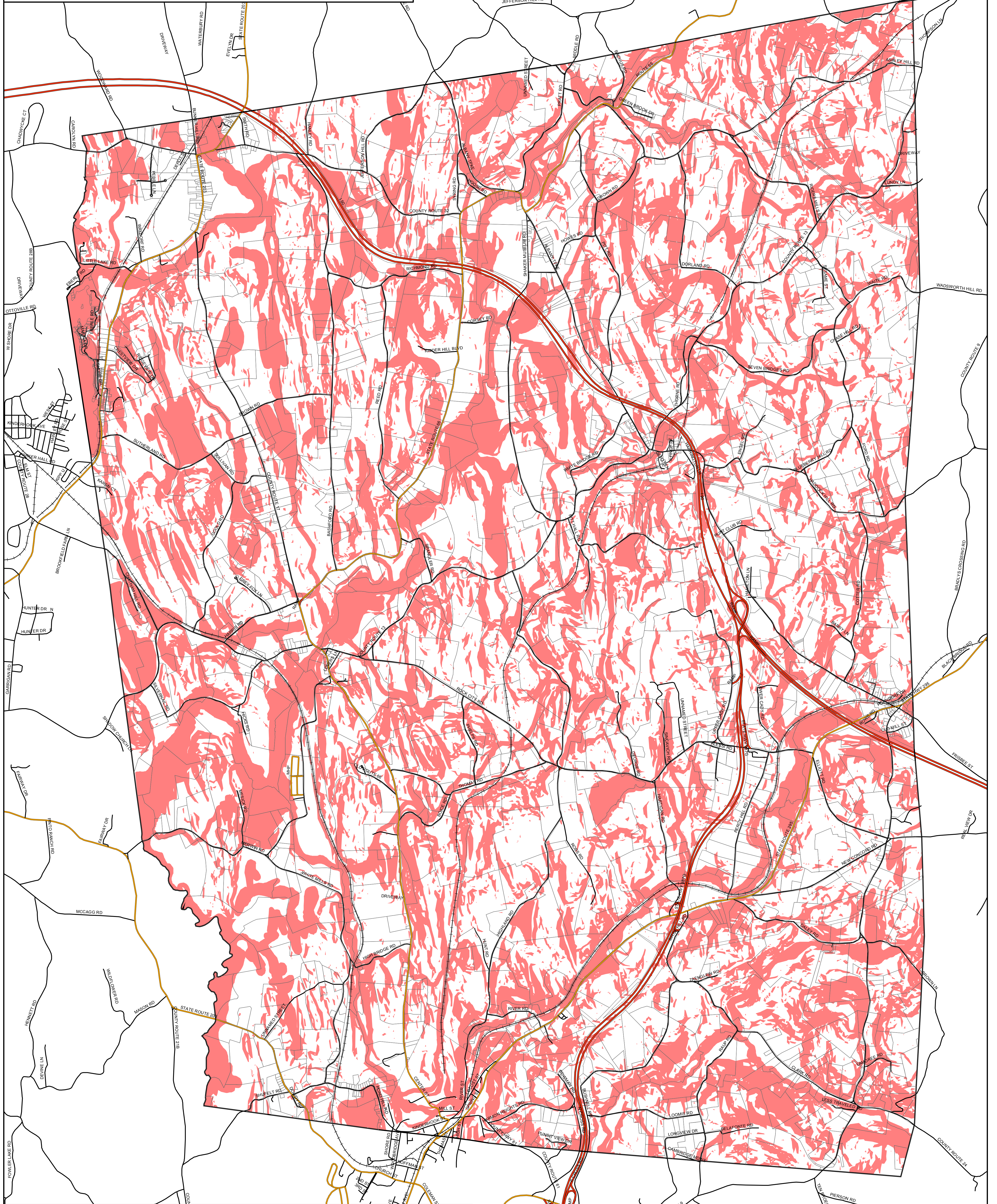


Town of Chatham

Columbia County, NY



Buildout Analysis
All Environmental Constraints Merged

- Town Boundary
- All Environmental Constraints Merged
- Roads**
- Primary Highway
- Secondary Road-State or County
- Local Road
- Railroads
- Parcel Boundaries

Draft Map Date:
 8-2-2005

**Community Planning &
 Environmental Associates**

Nan Stolzenburg, AICP - www.planningbetterplaces.com
 152 Stolzenburg Road, Berne, NY 12023
 Don Meltz, Planning and GIS - www.donmeltz.com